



STAFF REPORT

AGENDA ITEM: 13

CASE NUMBER: S.U.P. 00 – 223cc L.U.C.B. MEETING: January 12, 2017

LOCATION: 400 'from 1862 Germantown Parkway
OWNER: American Properties LP – Crown Castle
APPLICANT: T-Mobile – Cassie Cleveland
REPRESENTATIVE: Marche L. Rowe
REQUEST: Modification to allow flush mount antennae to protrude and additional 5 feet from the cell tower pole.

AREA:

Analysis of the Request

The Memphis City Council approved the Cordova Center Planned Development in 2000, included in this development was a cell tower at 1862 North Germantown Parkway.

This request is for the modification of the existing one-hundred fifty six (156') foot high monopole communication tower located at 1862 Germantown Parkway. The existing communication tower has five collectors that fit the monopole type tower pole.

This modification request is to remove the existing T-Mobile mount and equipment, then install (1) platform with pipe face, (8) panels (16) 1-5/8", (2) 1-3/5" hybrid cables. The new technology will necessitate antennas that will require the platform mount to extend 2 feet past the 30 inch maximum requirement, which will also extend the antenna face up to 2 feet more past the requirement, making the minimum full extension up to 4 feet past the 30 inch max.

This new technology will provide upgraded and improved cell phone reception and provide faster data streaming along with offering 4G wireless coverage to the customers living in the surrounding area.

CONCLUSIONS

1. Modification request is to remove the existing T-Mobile mount and equipment. To then install (1) platform with pipe face, (8) panels (16) 1-5/8", (2) 1-3/5" hybrid cables.
2. This modification will extend the antenna a minimum of 4' past the required 30" max required by UDC Section 2.6.I.
3. Requested extension of maximum distance from the cell tower pole of 5 feet.

RECOMMENDATION

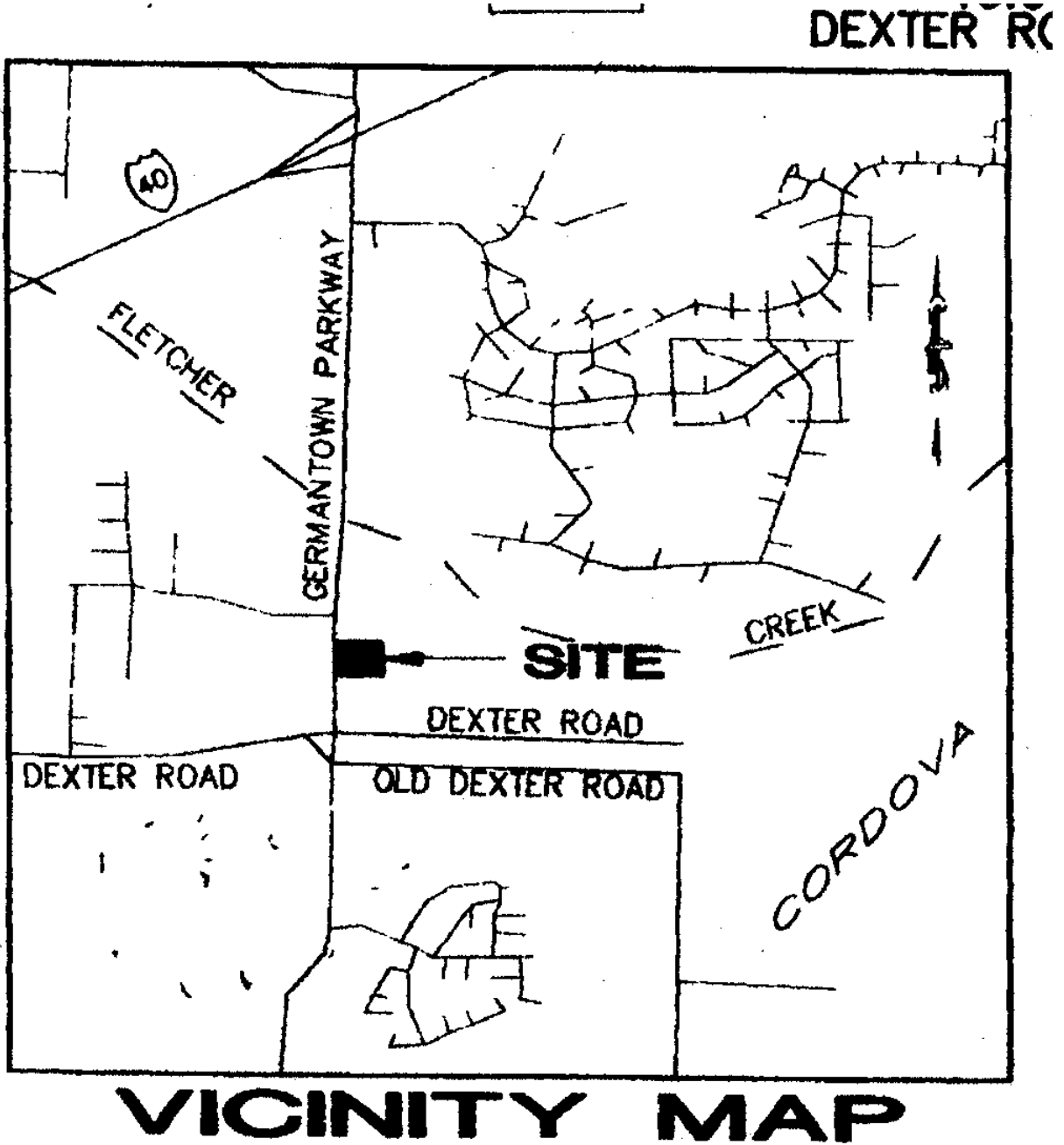
Approval with conditions

Staff Writer: Nancy Jane Baker

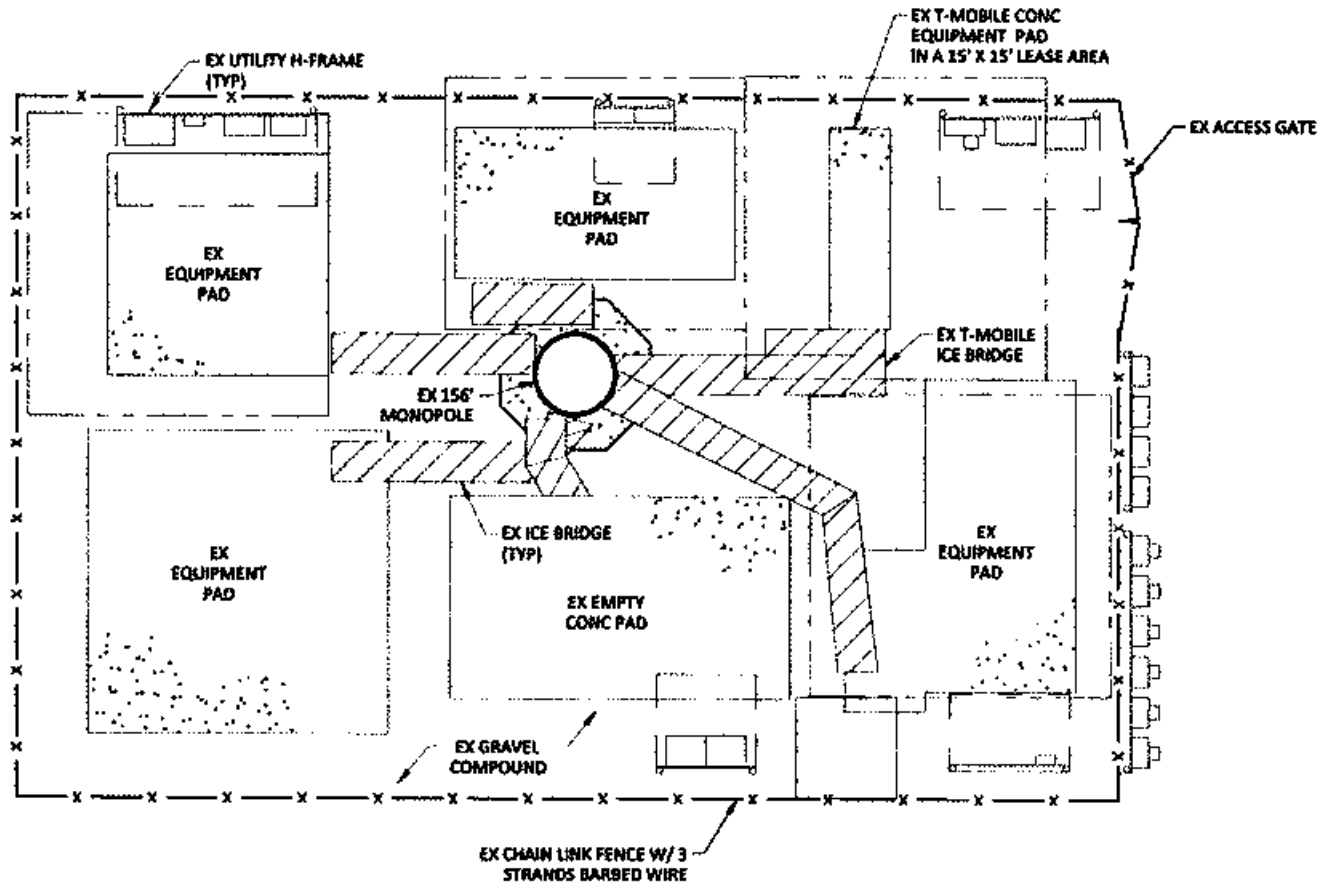
E-mail nancy.baker@memphistn.gov

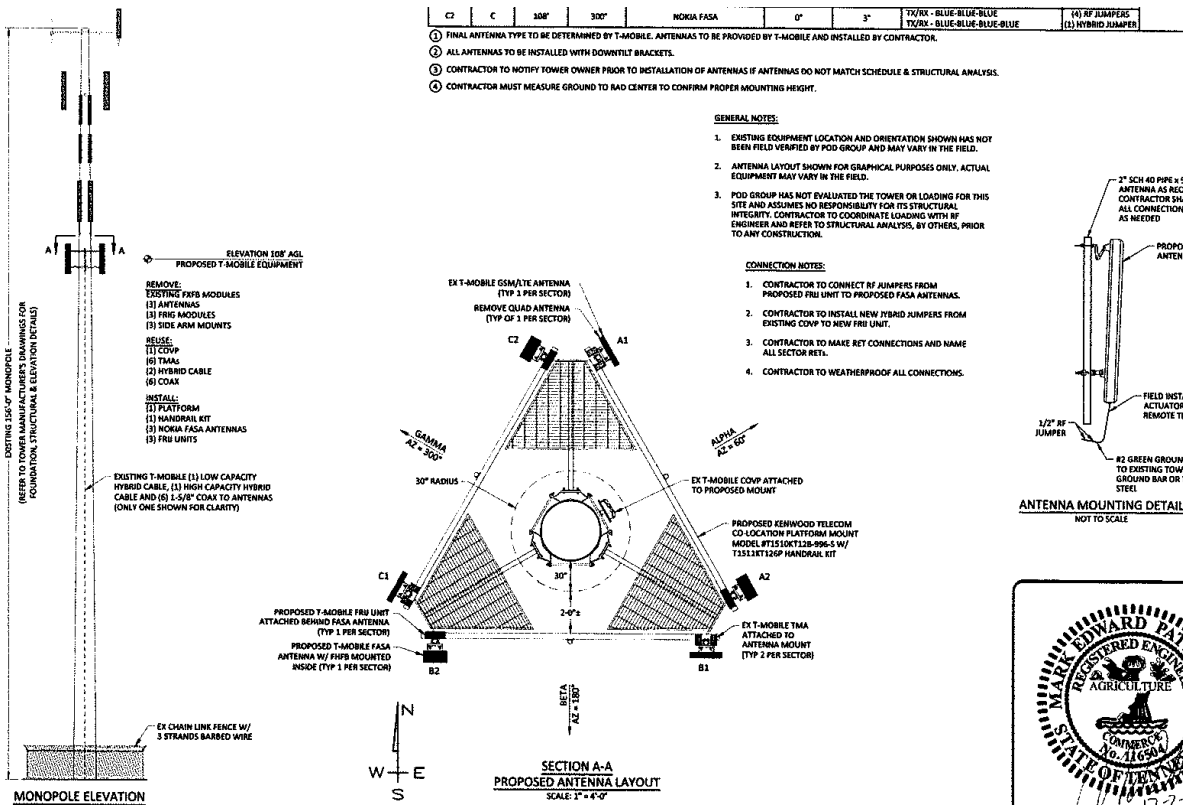


General Location Map



EXISTING STRUCTURES ON THE SITE OF THE CELL TOWER AT 1962 NORTH GERMANTOWN PARKWAY



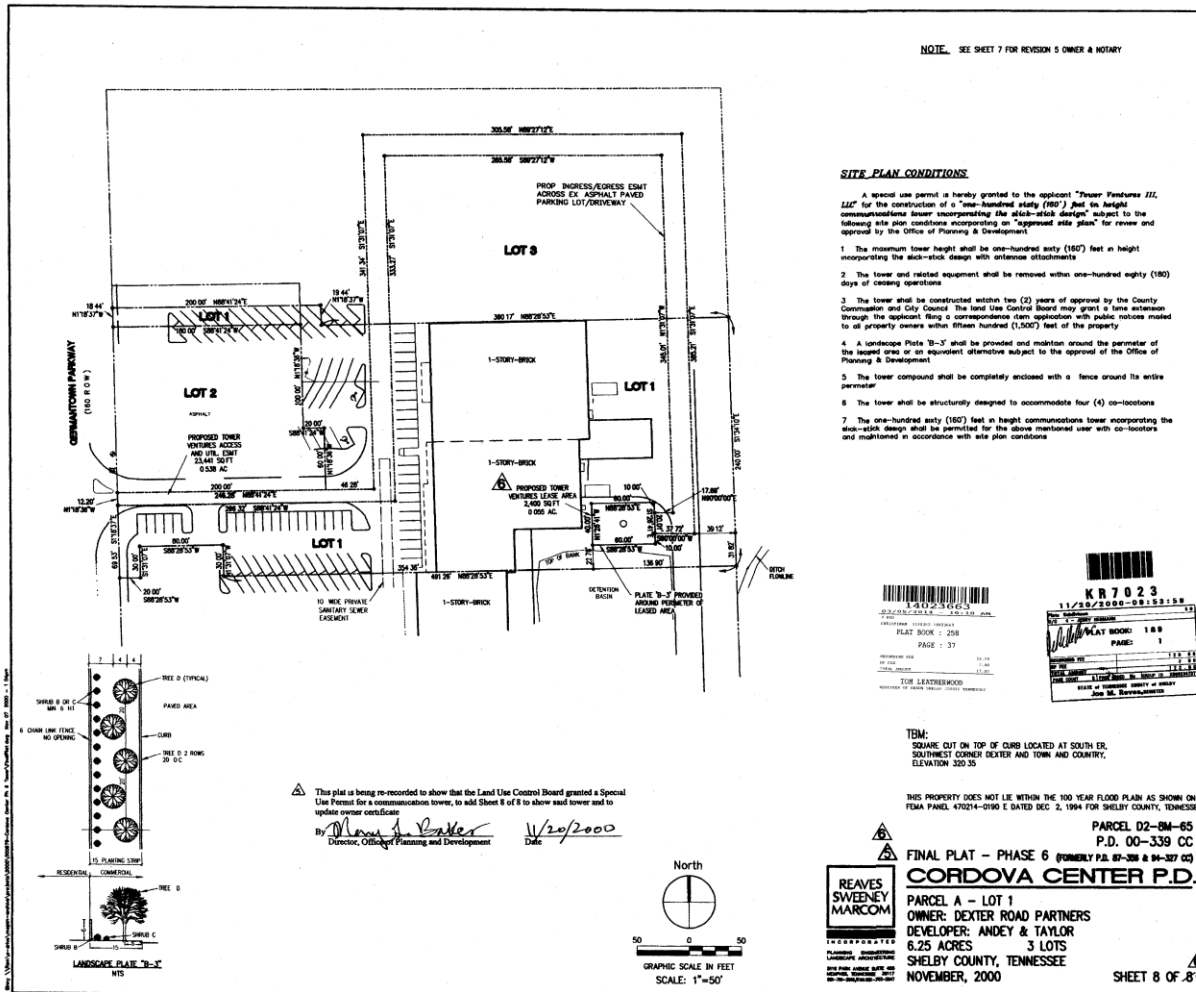


NEW EQUIPMENT TO BE USED AT THE SITE OF 1862 GERMANTOWN PARKWAY

Approved Site Plan

COPY OF THE FINAL PLAT FOR THE CORDOVA CENTER PD

(WITH THE LOCATION OF THE CELL TOWER SHOWN)



RECOMMEDATION APPROVAL with conditions

- 1) **Maximum extension from the cell tower pole is 5 feet.**

DEPARTMENTAL COMMENTS – NO COMMENTS

LETTERS OF SUPPORT - none

LETTERS OF OPPOSITION - none

