

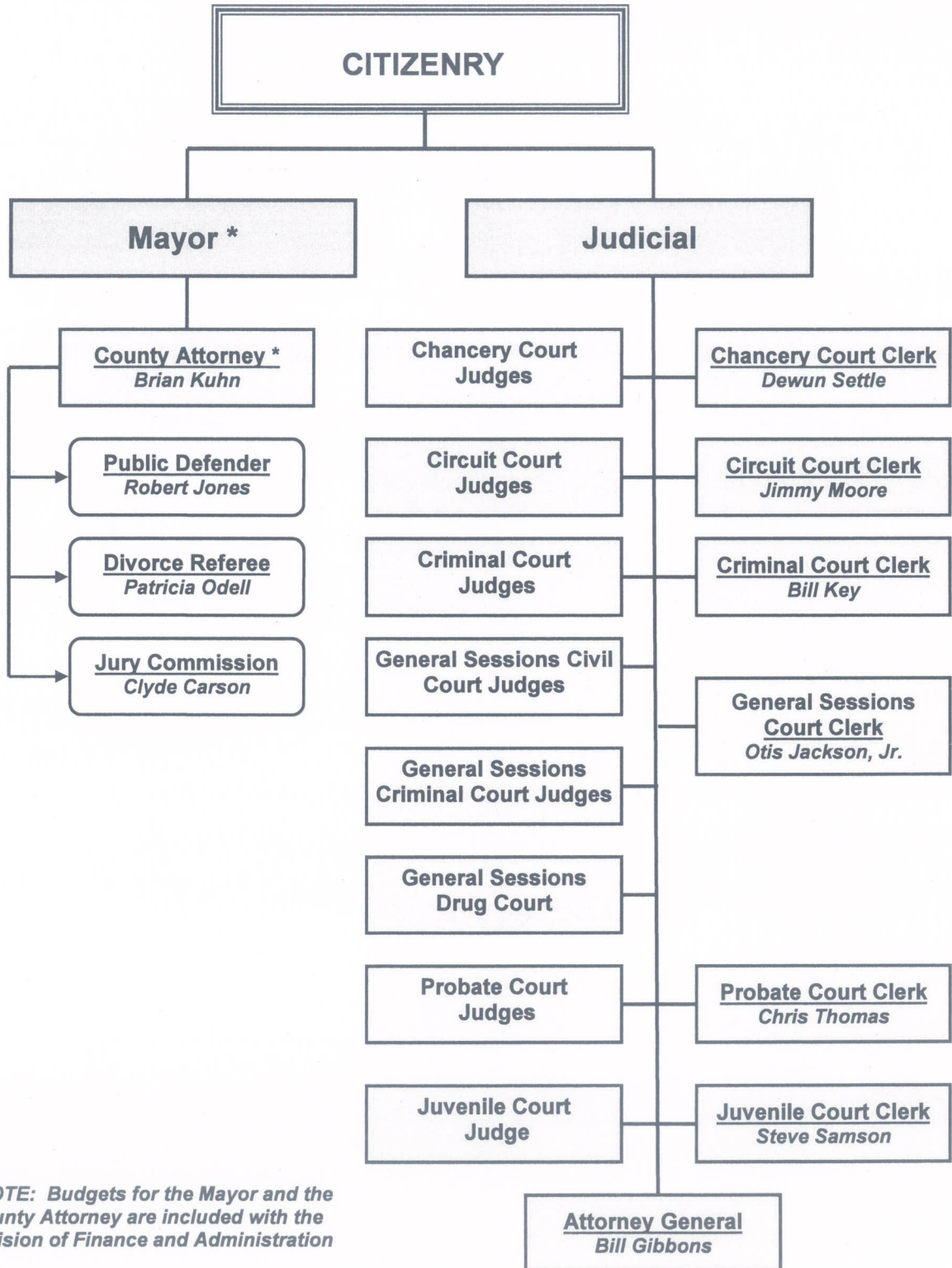
# JUDICIAL DIVISION



Program Organizational Chart.....	2
General Fund.....	7
Special Revenue Funds.....	43
Grant Funds .....	51

**Division Organizational Chart by Program**

**JUDICIAL**



*\*NOTE: Budgets for the Mayor and the County Attorney are included with the Division of Finance and Administration*