

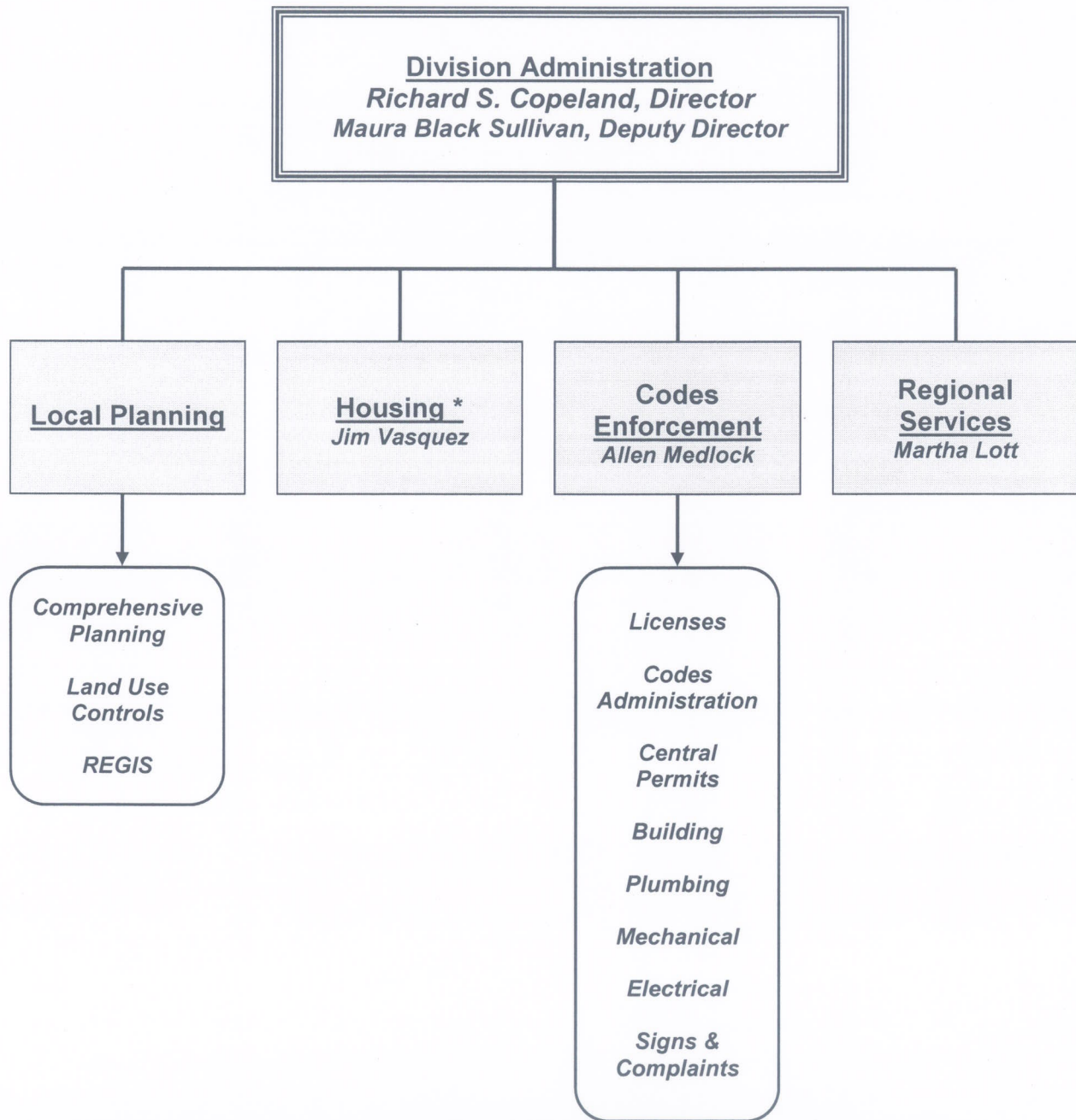
DIVISION OF PLANNING & DEVELOPMENT



| | |
|-----------------------------------|----|
| Program Organizational Chart..... | 2 |
| Division Overview..... | 3 |
| General Fund..... | 9 |
| Enterprise Fund..... | 13 |
| Grant Funds..... | 33 |

Division Organizational Chart by Program

PLANNING & DEVELOPMENT



** NOTE: Only the Housing Department is included in the General Fund; all other Planning & Development programs are funded through the Consolidated Codes Enforcement Fund (#950), an enterprise fund that is self-sustaining based on revenue generated from fees and permits and through Grants.*