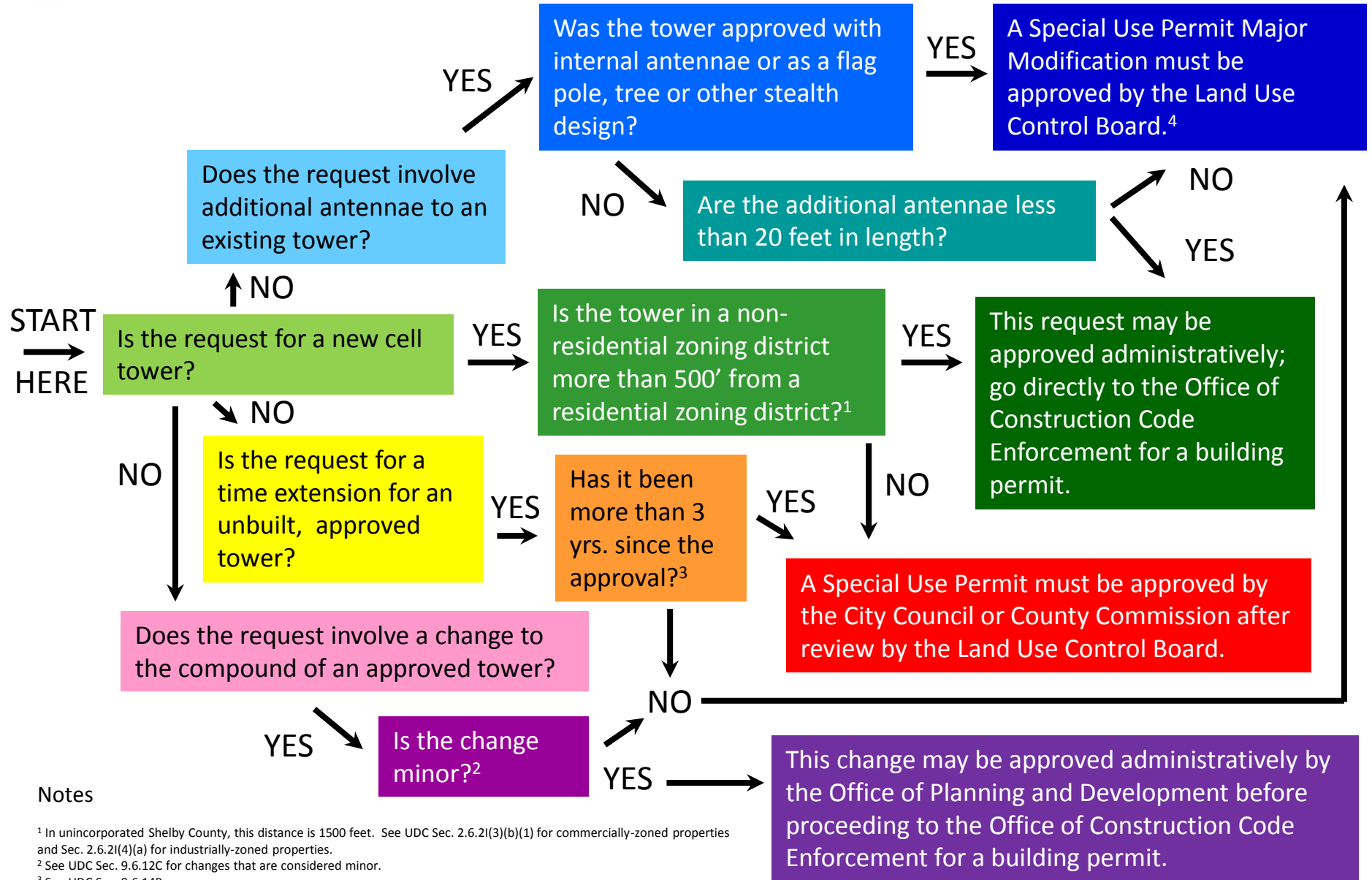




CELL TOWERS IN A NUTSHELL



Notes

¹ In unincorporated Shelby County, this distance is 1500 feet. See UDC Sec. 2.6.21(3)(b)(1) for commercially-zoned properties and Sec. 2.6.21(4)(a) for industrially-zoned properties.

² See UDC Sec. 9.6.12C for changes that are considered minor.

³ See UDC Sec. 9.6.14B.

⁴ Unless the antennae is internal or shielded by the "limbs" of a tree design tower.